

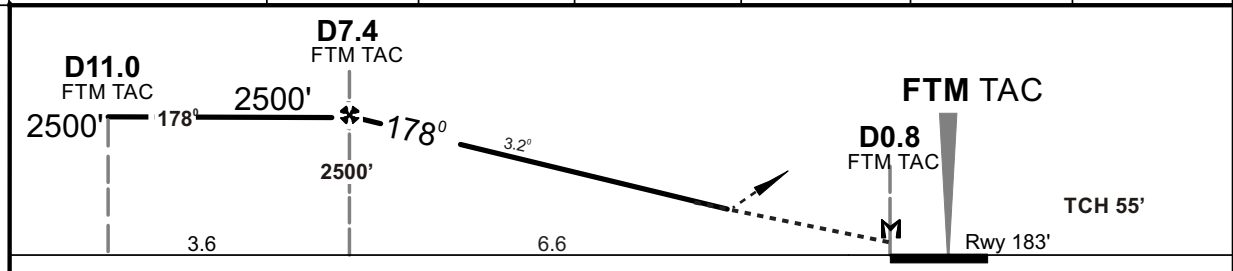
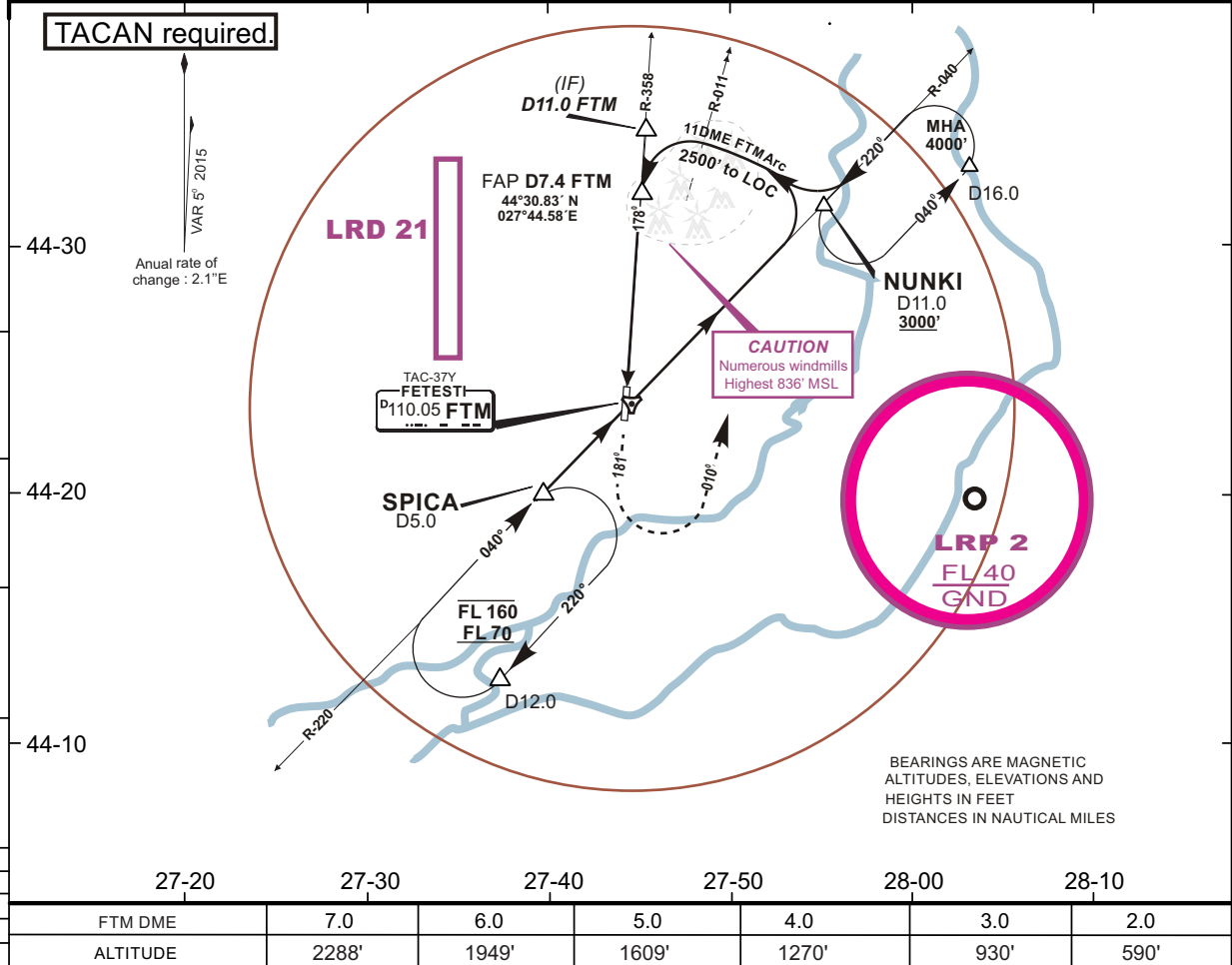
LRFT/FTM
BORCEA- FETESTI

FETESTI, ROMANIA
HI/LO TAC Rwy 18

ATIS 122.525		RUBIN Approach 123.375/309.625		RUBIN Tower 119.325/232.850		
TACAN FTM CH 37Y	Final Apch Crs 178°	Minimum Alt. D7.4FTM TAC 2500' (2327')	DA(H) 610' (427')	Apt Elev 183' Rwy 183'		
MISSED APPROACH: Climb on RWY HDG to 1500' then turn left Hdg 010° climbing to 3000' to intercept R-040 FTM TACAN						

BRIEFING STRIP™

Alt Set: hPa Rwy Elev: 7 hPa Trans level: By ATC Trans alt: 4000'



Gnd speed-Kts	70	90	100	120	140	160		1500' ↑ Hdg 010° 3000' ↓ Lt	R-040 FTM TAC	
Descent Angle	3.2°	396	510	566	679	793				906
MAP at D0.8 FTM TAC										

Standard. STRAIGHT-IN LANDING RWY 18				CIRCLE-TO-LAND				
DA(H) 610' (427')								
				ALS out		Max Kts	MDA(H)	VIS
A	RVR 1200m			RVR 1700m	100	685' /(502')	1600m	
B	RVR 1300m			RVR 1800m	135	685' /(502')	2000m	
C	RVR 1500m			RVR 2200m	180	785' /(602')	2400m	
D	RVR 1800m			RVR 2500m	205	800' /(617')	4800m	
E	RVR 1800m			RVR 2500m	250	800' /(617')	4800m	